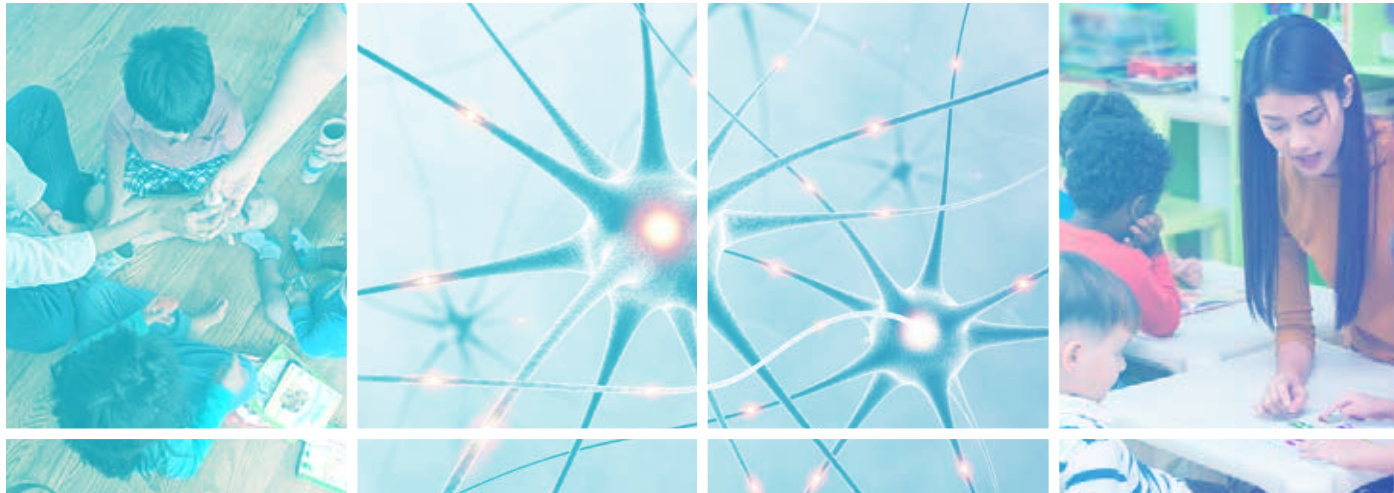


# Early Childhood Development Program Inventory

2017



CCDBG	Child Care and Development Block Grant	SOQ	Standards of Quality
CSA	Children’s Services Act	STEM	Science, technology, engineering, and mathematics
DBHDS	Department of Behavioral Health and Developmental Services	TANF	Temporary Assistance for Needy Families
DBVI	Department for the Blind and Vision Impaired	VARC	Virginia Autism Research Network
DSS	Department of Social Services	VCCPS	Virginia Child Care Provider Scholarship Program
F2F	Family to Family Network	VCU	Virginia Commonwealth University
FFY	Federal Fiscal Year	VDH	Virginia Department of Health
IDEA	Individual with Disabilities Education Act	VDOE	Virginia Department of Education
IEP	Individualized Education Program	VDSS	Virginia Department of Social Services
ITSN	Infant and Toddler Specialist Network	VECF	Virginia Early Childhood Foundation
JMU	James Madison University	VEHDIP	Virginia Early Hearing Detection and Intervention Program
MCH	Maternal and Child Health	VHSI	Virginia Healthy Start Initiative
MIECHV	Maternal, Infant, and Early Childhood Home Visiting	VKRP	Virginia Kindergarten Readiness Program
MOA	Memorandum of Agreement	VPI	Virginia Preschool Initiative
NFP	Nurse-Family Partnership	VPI+	Virginia Preschool Initiative Plus
OCS	Office of Children’s Services	WIC	Women Infants and Children
PALS	Phonological Awareness Literacy Screening	WIOA	Workforce Innovation and Opportunity Act
pre-K	Pre-kindergarten		
QRIS	Quality Rating and Improvement System		“Not available” – Program receives this type of funding, but information is not currently available at the state level
SAPT	Substance Abuse Prevention and Treatment Grant		
SCHEV	State Council of Higher Education for Virginia		
SNAPET	SNAP (Supplemental Nutrition Assistance Program) Employment and Training program		“Not applicable” – Program does not receive this type of funding

## Introduction

The 2016 General Assembly directed the Joint Legislative Audit and Review Commission (JLARC) to review early childhood development programs, prenatal through age four (Senate Joint Resolution 88). Items 2 and 3 of the resolution direct JLARC to develop a list of each program's lead agency, purpose, eligibility criteria, funding amounts, funding sources, target audience, and participation. This inventory is a compilation of the requested information.

JLARC staff included programs in the inventory that are intended to promote healthy brain and skills development of children, prenatal through age four. Other programs that support but do not directly promote the healthy brain and skills development of children were not included (e.g., Vaccines for Children, Child and Adult Care Food Program).

JLARC staff identified the entities that administer or co-administer the state's early childhood development programs through a review of the Code of Virginia, the Appropriation Acts, and state agency websites. The following 11 entities were found to administer or co-administer at least one early childhood development program:

- Department of Behavioral Health and Developmental Services
- Department for the Blind and Vision Impaired
- Department of Education
- Department of Health
- Department of Medical Assistance Services
- Department of Social Services
- Office of Children's Services
- State Council of Higher Education for Virginia
- University of Virginia
- Virginia Commonwealth University
- Virginia Early Childhood Foundation

In order to obtain information about the state's early childhood development programs, JLARC staff issued a data request to the administering entity of each program to collect the following information: (1) program purpose, (2) eligibility criteria, (3) funding amounts and sources, and (4) target audience and participation. To the extent possible, JLARC staff verified this information by reviewing the Code of Virginia, the Appropriation Acts, state agency websites, and federal reports.

Due to data limitations, the funding amounts and participation counts for some early childhood development programs are estimates. Funding and population data for some of the programs included in this inventory are not routinely tracked for children prenatal through age four. Therefore, estimates were generated using data from the U.S. Census Bureau and other sources. For the Virginia Child Care Provider Scholarship Program, for example, the Virginia Department of Social Services used American Community Survey data to estimate the proportion of scholarship recipients that serve children prenatal through age four.

# Contents

## Early learning: Pre-k and child care

Child Care Subsidy Program.....	1
Expansion of STEM Model for Kindergarten and Pre-Kindergarten.....	2
Head Start State Collaboration Office.....	3
Infant and Toddler Specialist Network.....	4
Innovative Partnerships Grant Program.....	5
Mixed Delivery Preschool Fund and Grant Program.....	6
Phonological Awareness Literacy Screening (PALS) – Pre-K.....	7
Project Pathfinders .....	8
Title I Preschool .....	9
Training of Individuals in Early Childhood Education Field .....	10
Virginia Child Care Provider Scholarship Program .....	11
Virginia Kindergarten Readiness Program .....	12
Virginia Preschool Initiative (VPI).....	13
Virginia Preschool Initiative Plus.....	14
Virginia Quality .....	15

## Programs for children with disabilities

Child Development Center.....	16
Children’s Services Act – Special Education .....	17
Early Childhood Special Education (IDEA Part B-619) .....	18
Early Intervention (IDEA Part C).....	19
Education and Early Childhood Support Services.....	20
Family to Family Network (F2F) .....	21
Virginia Autism Resource Center .....	22

## Voluntary home visiting

Centralized Intake Communities.....	23
Comprehensive Health Investment Project (CHIP) of Virginia .....	24
Early Impact Virginia (formerly Virginia Home Visiting Consortium) .....	25
James Madison University / Home Visiting Professional Development.....	26
Loving Steps/Virginia Healthy Start Initiative.....	27
Nurse-Family Partnership.....	28
Parents as Teachers .....	29
Project LINK.....	30
Resource Mothers.....	31
Virginia Healthy Families Program .....	32

## Other

Child and Dependent Care Expenses Deduction.....	33
VECF Base Funding/Smart Beginnings Network.....	34
Virginia Longitudinal Data System.....	35

## Child Care Subsidy Program

<b>Program category</b> Early learning	<b>Primary population served</b> Children ages 0-4	<b>Population served (FY16)</b> 18,561 children	<b>Lead agency</b> VDSS	
<b>Purpose</b>	To support family goals of economic self-sufficiency and child development by providing for the supervision, protection and well-being of children while a parent is participating in an approved work, education, or training activity.			
<b>Eligibility requirements</b>	<p>Participants must meet ALL of the following criteria:</p> <ol style="list-style-type: none"> <li>1. Be a parent or legal guardian of a child who is (a) under the age of 13 or (b) under the age of 18 and physically or mentally incapable of self-care</li> <li>2. Currently receive TANF, SNAPET, or Head Start services, have received TANF, OR belong to a low-income family</li> <li>3. Meet income eligibility scale requirements provided by VDSS</li> <li>4. Be employed or enrolled in education or training</li> <li>5. Be over the age of 18</li> <li>6. Be a U.S. citizen or "qualified alien" (criterion applies to child, not to parent or guardian)</li> </ol>			
	<b>Source (FY17)</b>	<b>Amount (FY17)</b>	<b>Source (FY16)</b>	<b>Amount (FY16)</b>
<b>State funding</b>	General fund	\$13,728,984	General fund	\$13,728,984
<b>Federal funding</b>	CCDBG and TANF	\$48,513,871	CCDBG and TANF	\$50,132,421
<b>Local/other</b>	Not applicable	--	Not applicable	--
<b>Total funding</b>		\$62,242,855		\$63,861,405

NOTE: Program has five categories: (1) TANF Child Care, (2) SNAPET Child Care, (3) TANF Transitional Child Care, (4) Head Start Wraparound Child Care, and (5) Fee Child Care. Funding information for FY17 is based on FY16 expenditure demographics. The Child Care Subsidy Program serves children under the age of 13 or under the age of 18 when the child is physically or mentally incapable of self-care. "Population served" data only reflects program services to children ages 0 through 4.

## Expansion of STEM Model for Kindergarten and Pre-Kindergarten

<b>Program category</b> Early learning	<b>Primary population served</b> Children age 4	<b>Population served (FY16)</b> 4,352 children	<b>Lead agency</b> VDOE	
<b>Purpose</b>	To support expansion of a STEM model program for kindergarten and preschool students in certain localities.			
<b>Eligibility requirements</b>	Kindergarten and preschool students in schools in Accomack, Arlington, Chesterfield, Fairfax, Loudoun, Norfolk, Petersburg, Richmond City, and Wythe.			
	<b>Source (FY17)</b>	<b>Amount (FY17)</b>	<b>Source (FY16)</b>	<b>Amount (FY16)</b>
<b>State funding</b>	General fund	\$600,000	General fund	\$325,000
<b>Federal funding</b>	Not applicable	--	Not applicable	--
<b>Local/other</b>	Not applicable	--	Not applicable	--
<b>Total funding</b>		\$600,000		\$325,000

NOTE: Due to limited state funds, the program served only five school divisions in 2015-16: Accomack, Fairfax County, Loudoun County, Petersburg, and Wythe County.

## Head Start State Collaboration Office

<b>Program category</b> Early learning	<b>Primary population served</b> Head Start programs	<b>Population served (FY16)</b> 700 Head Start directors, staff, parents, community partners	<b>Lead agency</b> VDSS	
<b>Purpose</b>	To facilitate collaboration among Head Start / Early Head Start agencies and other entities that provide services to benefit low-income children and their families.			
<b>Eligibility requirements</b>	Not applicable			
	<b>Source (FY17)</b>	<b>Amount (FY17)</b>	<b>Source (FY16)</b>	<b>Amount (FY16)</b>
<b>State funding</b>	General fund	\$43,750	General fund	\$43,750
<b>Federal funding</b>	Head Start Collaboration Grant	\$ 175,000	Head Start Collaboration Grant	\$175,000
<b>Local/other</b>	Not applicable	--	Not applicable	--
<b>Total funding</b>		\$218,750		\$218,750

NOTE: "Population served" data reflects number of participants at four professional development conferences held in 2015-2016, and 24 scholarship recipients.

## Infant and Toddler Specialist Network

<b>Program category</b> Early learning	<b>Primary population served</b> Child care programs and providers	<b>Population served (FY16)</b> 7,409 child care programs and providers	<b>Lead agency</b> VDSS
---	---	--	----------------------------

<b>Purpose</b>	To improve providers' care of infants and toddlers through technical assistance, on-site support, and professional development resources.
<b>Eligibility requirements</b>	To receive general services, providers must meet ALL of the following criteria: 1. Care for infants and toddlers (0-36 months) 2. Be interested in Infant and Toddler Specialist Network services To receive intensive on-site technical assistance, providers must be regulated by the military, state, OR local ordinance.

	<b>Source (FY17)</b>	<b>Amount (FY17)</b>	<b>Source (FY16)</b>	<b>Amount (FY16)</b>
<b>State funding</b>	Not applicable	--	Not applicable	--
<b>Federal funding</b>	CCDBG	\$2,545,475	CCDBG	\$2,545,475
<b>Local/other</b>	Not applicable	--	Not applicable	--
<b>Total funding</b>		\$2,545,475		\$2,545,475

NOTE: "Population served" data includes 151 child care programs that participated (many of which received on-site services), 7,202 providers that completed training, and 56 providers that completed 1-2-3 READ! coaching.



## Innovative Partnerships Grant Program

<b>Program category</b> Early learning	<b>Primary population served</b> Communities	<b>Population served (FY16)</b> 14 communities	<b>Lead agency</b> VDOE/VECF
---	---	---	---------------------------------

<b>Purpose</b>	To support and document for replication innovative partnerships in local communities that are improving access to high quality early education/preschool for at-risk children, and readying children, their families, and schools for kindergarten success.
----------------	---

<b>Eligibility requirements</b>	<p>Grantees must meet ALL of the following criteria:</p> <ol style="list-style-type: none"> <li>1. Have existing innovative partnerships with a focus on             <ol style="list-style-type: none"> <li>a. Improving access to high quality early education/preschool for at-risk children AND/OR</li> <li>b. Readying children, their families and schools for academic success</li> </ol> </li> <li>2. Implement a strategy to             <ol style="list-style-type: none"> <li>a. Address regional/local priorities regarding needs and eligibility for VPI enrollment,</li> <li>b. Promote partnerships between private partners, schools, and/or post-secondary institutions AND/OR</li> <li>c. Inform and support data-sharing and/or professional development practices to facilitate the effective transition of children from early childhood education to elementary school</li> </ol> </li> <li>3. Include measurable outcomes, with defined targets and an established capacity for data collection</li> <li>4. Demonstrate the capacity for coordination, convening, and successful implementation of project activities</li> <li>5. Demonstrate the capacity for and commitment to documenting project activities and collecting project data</li> </ol>
---------------------------------	--

	<b>Source (FY17)</b>	<b>Amount (FY17)</b>	<b>Source (FY16)</b>	<b>Amount (FY16)</b>
<b>State funding</b>	General fund	\$250,000	General fund	\$250,000
<b>Federal funding</b>	Not applicable	--	Not applicable	--
<b>Local/other</b>	Not applicable	--	Not applicable	--
<b>Total funding</b>		\$250,000		\$250,000

NOTE: Three Smart Beginnings programs were selected to receive grants out of 11 applicants in FY16. Grantees include Smart Beginnings Thomas Jefferson Area, Smart Beginnings Rappahannock Area, and Smart Beginnings Greater Roanoke. These Smart Beginnings programs served 14 cities and counties.

## Mixed Delivery Preschool Fund and Grant Program

<b>Program category</b> Early learning	<b>Primary population served</b> Communities	<b>Population served (FY17)</b> 7 communities	<b>Lead agency</b> VDOE/VECF
---	---	--	---------------------------------

<b>Purpose</b>	To pilot an initiative to promote public-private delivery of pre-K services to at-risk children.
<b>Eligibility requirements</b>	<p>The following organizations may apply:</p> <ol style="list-style-type: none"> <li>1. School divisions, local governments, human service agencies, child care providers and preschools, United Way agencies, Smart Beginnings initiatives, faith-based organizations, chambers of commerce, institutions of higher education, and other community-based organizations</li> <li>2. Jurisdictions that have been funded through VPI Plus but have not been able to fill all of their slots are NOT eligible to apply.</li> </ol> <p>Priority is given to communities who do not fully utilize their VPI (NOT VPI Plus) allocation and/or can document unmet need for services for at-risk preschoolers.</p>

	<b>Source (FY17)</b>	<b>Amount (FY17)</b>	<b>Source (FY16)</b>	<b>Amount (FY16)</b>
<b>State funding</b>	General fund	\$1,500,000	General fund	--
<b>Federal funding</b>	Not applicable	--	Not applicable	--
<b>Local/other</b>	Not applicable	--	Not applicable	--
<b>Total funding</b>		\$1,500,000		--

NOTE: Grants recipients for this program in FY17: James Madison University, Smart Beginnings Rappahannock Area, United Way of Roanoke Valley, United Way of Thomas Jefferson Area, and Wythe County Public Schools. State funding began in FY17. Population served is for FY17.

## Phonological Awareness Literacy Screening (PALS) – Pre-K

<b>Program category</b> Early learning	<b>Primary population served</b> Children age 4	<b>Population served (FY16)</b> 26,272 children	<b>Lead agency</b> VDOE/UVA	
<b>Purpose</b>	To measure preschoolers’ developing knowledge of important literacy fundamentals and offer guidance to teachers for tailoring instruction to children’s specific needs.			
<b>Eligibility requirements</b>	Screening is conducted for students in a publicly funded or partially publicly funded preschool			
	<b>Source (FY17)</b>	<b>Amount (FY17)</b>	<b>Source (FY16)</b>	<b>Amount (FY16)</b>
<b>State funding</b>	General fund	\$196,999	General fund	\$196,999
<b>Federal funding</b>	Not applicable	--	Not applicable	--
<b>Local/other</b>	Not applicable	--	Not applicable	--
<b>Total funding</b>		\$196,999		\$196,999

NOTE: “Population served” data reflects the number of preschoolers for which PALS data were reported in Spring 2016. Data includes preschoolers who are five years old but have not yet entered kindergarten. There is no specific PALS-PreK appropriation. Funding data reflects portion of overall PALS funding.

## Project Pathfinders

<b>Program category</b> Early learning	<b>Primary population served</b> Early learning professionals	<b>Population served (FY17)</b> 357 early learning professionals	<b>Lead agency</b> VDOE/VECF	
<b>Purpose</b>	To increase the skills of Virginia’s early education workforce.			
<b>Eligibility requirements</b>	<p>Participants must meet ALL of the following criteria:</p> <ol style="list-style-type: none"> <li>1. Currently be employed in a Virginia preschool or child care setting working directly with young children (ages zero to five), including administrators</li> <li>OR</li> <li>2. Be a high school student dually-enrolled in Virginia community college early education coursework</li> </ol> <p>Priority is given to individuals working with at-risk children, defined as children benefiting from child care subsidies, qualifying for free or reduced-price lunch, or participating in public preschool programs.</p>			
	<b>Source (FY17)</b>	<b>Amount (FY17)</b>	<b>Source (FY16)</b>	<b>Amount (FY16)</b>
<b>State funding</b>	General fund	\$600,000	Not applicable	--
<b>Federal funding</b>	Not applicable	--	Not applicable	--
<b>Local/other</b>	Not applicable	--	Not applicable	--
<b>Total funding</b>		\$600,000		

NOTE: State funding for program began in FY17. "Population served" data is for FY17.

## Title I Preschool

<b>Program category</b> Early learning	<b>Primary population served</b> Children age 4	<b>Population served (FY16)</b> 2,754 children	<b>Lead agency</b> VDOE	
<b>Purpose</b>	To support instructional programs in school divisions and schools with high numbers or percentages of low-income students to ensure that all children meet challenging content and achievement standards.			
<b>Eligibility requirements</b>	To operate a schoolwide program, schools must have a student population of at least 40% of students from low-income families. To operate a targeted program, schools must focus services on low-income students who are failing, or at most risk of failing, to meet state academic standards.			
	<b>Source (FY17)</b>	<b>Amount (FY17)</b>	<b>Source (FY16)</b>	<b>Amount (FY16)</b>
<b>State funding</b>	Not applicable	--	Not applicable	--
<b>Federal funding</b>	Title I	\$16,946,056	Title I	\$16,220,260
<b>Local/other</b>	Not applicable	--	Not applicable	--
<b>Total funding</b>		\$16,946,056		\$16,220,260

NOTE: Title I funds are sometimes used to support students in Head Start and the Virginia Preschool Initiative.

## Training of Individuals in Early Childhood Education Field

<b>Program category</b> Early learning	<b>Primary population served</b> Child care professionals	<b>Population served (FY16)</b> 8,751 professionals	<b>Lead agency</b> VDSS	
<b>Purpose</b>	To provide professional development opportunities for individuals in the field of early childhood education.			
<b>Eligibility requirements</b>	Open to child care providers at any level. Online training courses are offered by VDSS through the Community College Workforce Alliance (for a fee), or Pennsylvania State University's Better Kid Care Program			
	<b>Source (FY17)</b>	<b>Amount (FY17)</b>	<b>Source (FY16)</b>	<b>Amount (FY16)</b>
<b>State funding</b>	Not applicable	--	Not applicable	--
<b>Federal funding</b>	CCDBG	\$189,560	CCDBG	\$189,000
<b>Local/other</b>	Not applicable	--	Not applicable	--
<b>Total funding</b>		\$189,560		\$189,000

NOTE: Training programs are available to child care professionals caring for all ages of children. While data on the number of professionals trained is collected, breakouts identifying those serving only children ages 0 through 4 years are not always available. "Population served" and funding data are therefore estimated using American Community Survey data. "Population served" data is duplicated.

## Virginia Child Care Provider Scholarship Program

<b>Program category</b> Early learning	<b>Primary population served</b> Child care professionals	<b>Population served (FY16)</b> 489 professionals	<b>Lead agency</b> VDSS	
<b>Purpose</b>	To provide scholarships to child care professionals for pre-approved, undergraduate courses that lead to a degree or certificate in early childhood education.			
<b>Eligibility requirements</b>	<p>Scholarship recipients must meet ALL of the following criteria:</p> <ol style="list-style-type: none"> <li>1. Be either employed in a child care program in Virginia OR be domiciled in Virginia and employed in a program outside Virginia OR declare intent to become employed in child care</li> <li>2. Select a department-approved course for which the applicant has not previously received scholarship funds</li> <li>3. Have no occurrence of the following for courses for which VCCPS was received: <ol style="list-style-type: none"> <li>a. Did not register for course after receiving award.</li> <li>b. Did not complete course and received a grade of W for withdrawal.</li> <li>c. Did not receive a passing grade.</li> </ol> </li> </ol> <p>Priority is given to applicants currently employed as child care professionals and those intending to become employed in child care. As of 2017, the lifetime award for undergraduate tuition and technology fees was set at \$3,570.</p>			
	<b>Source (FY17)</b>	<b>Amount (FY17)</b>	<b>Source (FY16)</b>	<b>Amount (FY16)</b>
<b>State funding</b>	Not applicable	--	Not applicable	--
<b>Federal funding</b>	CCDBG	\$168,000	CCDBG	\$168,000
<b>Local/other</b>	Not applicable	--	Not applicable	--
<b>Total funding</b>		\$168,000		\$168,000

NOTE: "Population served" data and funding data are estimated using American Community Survey data. VDSS's scholarship database does not provide unduplicated participant reports or data on the age of children served by child care providers participating in the scholarship program.

## Virginia Kindergarten Readiness Program

<b>Program category</b> Early learning	<b>Primary population served</b> Children age 5	<b>Population served (FY16)</b> 9,809 children	<b>Lead agency</b> VDOE/UVA	
<b>Purpose</b>	To expand the assessment of children at kindergarten entry beyond literacy to include the school readiness domains of math, social skills, and self-regulation.			
<b>Eligibility requirements</b>	Available to any kindergarten student whose school division elects to participate in VKRP.			
	<b>Source (FY17)</b>	<b>Amount (FY17)</b>	<b>Source (FY16)</b>	<b>Amount (FY16)</b>
<b>State funding</b>	General fund	\$900,000	General fund	\$900,000
<b>Federal funding</b>	Not applicable	--	Not applicable	--
<b>Local/other</b>	Not applicable	--	Not applicable	--
<b>Total funding</b>		\$900,000		\$900,000

NOTE: Program assesses the school readiness of the children at kindergarten entry, which makes it relevant to this inventory. "Population served" data reflects the number of children assessed as of Fall 2015. In total, 528 kindergarten teachers and 21 school divisions participated in the program in Fall 2015.



## Virginia Preschool Initiative (VPI)

<b>Program category</b> Early learning	<b>Primary population served</b> Children age 4	<b>Population served (FY16)</b> 18,356 children	<b>Lead agency</b> VDOE	
<b>Purpose</b>	To provide quality preschool programs for at-risk four-year-olds who are Virginia residents and are unserved by Head Start.			
<b>Eligibility requirements</b>	<p>Participants must meet ONE of the following criteria:</p> <ol style="list-style-type: none"> <li>1. Have family income less than 200% of the Federal Poverty Line</li> <li>2. Have family income less than 350% of the Federal Poverty Line AND have a disability or other special needs</li> <li>3. Be homeless</li> <li>4. Have parents who dropped out of school</li> </ol> <p>Up to 15% of a division's slots may be filled based on locally-established eligibility criteria so as to meet the unique needs of at-risk children in the community.</p>			
	<b>Source (FY17)</b>	<b>Amount (FY17)</b>	<b>Source (FY16)</b>	<b>Amount (FY16)</b>
<b>State funding</b>	Lottery proceeds	\$69,351,713	Lottery proceeds	\$70,651,478
<b>Federal funding</b>	Not applicable	--	Not applicable	--
<b>Local/other</b>	Local match	\$39,293,253	Local match	\$39,501,527
<b>Total funding</b>		\$108,644,966		\$110,153,005

NOTE: In addition to serving children, VPI funding allows for professional development of teachers in public and private settings, wrap around services for families, and family engagement supports. Local funding is required because of local match requirement.

## Virginia Preschool Initiative Plus

<b>Program category</b> Early learning	<b>Primary population served</b> Children age 4	<b>Population served (FY16)</b> 2,804 children	<b>Lead agency</b> VDOE	
<b>Purpose</b>	To increase preschool access, quality, and impact by providing preschool programs through school divisions and private providers. Also to build capacity and infrastructure at the local and state levels related to early childhood education.			
<b>Eligibility requirements</b>	Participants must meet ALL of the following criteria: 1. Have family income less than 200% of the Federal Poverty Level 2. Be age 4 by September 30 of a given school year 3. Live in participating school division			
	<b>Source (FY17)</b>	<b>Amount (FY17)</b>	<b>Source (FY16)</b>	<b>Amount (FY16)</b>
<b>State funding</b>	General fund	\$3,600,000	General fund	\$1,000,000
<b>Federal funding</b>	Preschool Development Grant – Expansion Grant	\$17,500,000	Preschool Development Grant – Expansion Grant	\$17,500,000
<b>Local/other</b>	Local match	\$4,053,086	Local match	\$4,133,618
<b>Total funding</b>		\$25,153,086		\$22,633,618

NOTE: "Population served" data reflects 1,230 new slots and 1,574 improved slots; also includes some five-year-olds who are not yet in kindergarten. Eleven school divisions participated in FY16: Brunswick, Chesterfield, Fairfax, Giles, Henrico, Norfolk, Petersburg, Prince William, Richmond City, Sussex, Winchester. In addition to serving children, program engages parents and provides technical assistance and training to professionals. VPI Plus federal grant was awarded in FY15 in the amount of \$17,500,000 annually. State and local funds are the program's required match amounts. The match may be cash or in-kind. The federal grant is awarded from January 1 to December 31 annually.

## Virginia Quality

<b>Program category</b> Early learning	<b>Primary population served</b> Child care and pre-K providers	<b>Population served (FY16)</b> 886 providers	<b>Lead agency</b> VDSS/VECF	
<b>Purpose</b>	To assess, improve, and communicate the quality of child care and early education programs.			
<b>Eligibility requirements</b>	<p>Participating programs must be in good standing with all requirements of their regulating authority, have no history of child care license revocation in the year preceding application, and be one of the following program types:</p> <ol style="list-style-type: none"> <li>1. VDSS licensed child day center or family day home</li> <li>2. Religious exempt child day center and approved VDSS subsidy vendor</li> <li>3. Head Start program</li> <li>4. Department of Defense child care center</li> <li>5. Virginia Preschool Initiative program</li> <li>6. State entity-operated program (those that are legally prohibited from state licensure)</li> </ol>			
	<b>Source (FY17)</b>	<b>Amount (FY17)</b>	<b>Source (FY16)</b>	<b>Amount (FY16)</b>
<b>State funding</b>	Not applicable	--	Not applicable	--
<b>Federal funding</b>	CCDBG	\$2,536,850	CCDBG	\$2,538,851
<b>Local/other</b>	Not applicable	--	Not applicable	--
<b>Total funding</b>		\$2,536,850		\$2,538,851

NOTE: Virginia Quality is Virginia's quality rating and improvement system (QRIS). It was previously called the Virginia Star Quality Initiative. It is co-administered by VDSS and VECF. Eight regional lead agencies implement the program.

## Child Development Center

<b>Program category</b> Programs for children with disabilities	<b>Primary population served</b> Children ages 0-4	<b>Population served (FY16)</b> 1,339 children	<b>Lead agency</b> VDH
--	---	---	---------------------------

<b>Purpose</b>	To provide evaluation and referral services in the area of developmental and behavioral pediatrics, including the diagnosis and treatment of developmental disorders and emotional, behavioral, and psychosomatic problems.
<b>Eligibility requirements</b>	<ol style="list-style-type: none"> <li>1. Be a resident of Virginia</li> <li>2. Be between the ages of birth and 21</li> <li>3. AND             <ol style="list-style-type: none"> <li>a. Be suspected to have a developmental, emotional, or behavioral disorder OR</li> <li>b. Be diagnosed with a developmental, emotional, or behavioral disorder OR</li> <li>c. Have severe or multiple risk factors for these conditions</li> </ol> </li> </ol>

	<b>Source (FY17)</b>	<b>Amount (FY17)</b>	<b>Source (FY16)</b>	<b>Amount (FY16)</b>
<b>State funding</b>	General fund	\$306,012	General fund	\$455,371
<b>Federal funding</b>	MCH block grant	\$193,938	MCH block grant	\$253,532
<b>Local/other</b>	Not applicable	--	Not applicable	--
<b>Total funding</b>		\$499,950		\$708,903

NOTE: Funding data for FY17 is estimated based on program participation in FY15 and FY16. The VDH accounting system does not track expenditures by the cohorts in this study, therefore a ratio of children 0-5 to total children served was calculated based on data provided by the program staff. Expenditures charged to the account coding associated with this program were allocated based on the ratio. Any general administrative support funding was allocated based on the ratio of the Child Development Center program expenditures to total Children with Special Health Care Needs expenditures.

## Children's Services Act – Special Education

<b>Program category</b> Programs for children with disabilities	<b>Primary population served</b> Children ages 0-4	<b>Population served (FY16)</b> 47 children	<b>Lead agency</b> OCS
--	---	--	---------------------------

<b>Purpose</b>	To create a collaborative system of services and funding that is child-centered, family-focused, and community-based when addressing the strengths and needs of troubled and at-risk youths and their families in Virginia.
<b>Eligibility requirements</b>	Participants must meet ALL of the following criteria: 1. Participate in special education (IDEA Part B-619) 2. Have an IEP that requires private placement for special education 3. Have an IEP and require community-based services to prevent more restrictive placements

	<b>Source (FY17)</b>	<b>Amount (FY17)</b>	<b>Source (FY16)</b>	<b>Amount (FY16)</b>
<b>State funding</b>	General fund	\$816,221	General fund	\$825,010
<b>Federal funding</b>	Not available	--	Not available	--
<b>Local/other</b>	Local	\$439,504	Local	\$444,237
<b>Total funding</b>		\$1,255,725		\$1,269,247

NOTE: Funding amounts based on expenditures as Children's Services Act funds are not discretely appropriated by age group or category (e.g., mental health, special education, other).

## Early Childhood Special Education (IDEA Part B-619)

<b>Program category</b> Programs for children with disabilities	<b>Primary population served</b> Children ages 2-4	<b>Population served (FY16)</b> 22,155 children	<b>Lead agency</b> VDOE
--	---	--	----------------------------

<b>Purpose</b>	To provide assistance for the education of all children with disabilities.
----------------	--

<b>Eligibility requirements</b>	<p>Participating children must be two to five years old and have ONE of the following disabilities:</p> <table> <tr> <td>1. Autism</td> <td>8. Other health impairment</td> </tr> <tr> <td>2. Deafblindness</td> <td>9. Speech or language impairment</td> </tr> <tr> <td>3. Emotional disability</td> <td>10. Traumatic brain injury</td> </tr> <tr> <td>4. Hearing impairment</td> <td>11. Visual impairment or blindness</td> </tr> <tr> <td>5. Learning disability</td> <td>12. Developmental delay</td> </tr> <tr> <td>6. Intellectual disability</td> <td>13. Multiple disabilities</td> </tr> <tr> <td>7. Orthopedic impairment</td> <td></td> </tr> </table>	1. Autism	8. Other health impairment	2. Deafblindness	9. Speech or language impairment	3. Emotional disability	10. Traumatic brain injury	4. Hearing impairment	11. Visual impairment or blindness	5. Learning disability	12. Developmental delay	6. Intellectual disability	13. Multiple disabilities	7. Orthopedic impairment	
1. Autism	8. Other health impairment														
2. Deafblindness	9. Speech or language impairment														
3. Emotional disability	10. Traumatic brain injury														
4. Hearing impairment	11. Visual impairment or blindness														
5. Learning disability	12. Developmental delay														
6. Intellectual disability	13. Multiple disabilities														
7. Orthopedic impairment															

	<b>Source (FY17)</b>	<b>Amount (FY17)</b>	<b>Source (FY16)</b>	<b>Amount (FY16)</b>
<b>State funding</b>	General fund	\$41,710,907	General fund	\$38,792,755
<b>Federal funding</b>	IDEA grant	\$8,863,495	IDEA grant	\$8,537,221
<b>Local/other</b>	Not available	--	Not available	--
<b>Total funding</b>		\$50,574,402		\$47,329,976

NOTE: "Population served" data reflects the number of children served during FY16 and was calculated as the sum of the December 2015 Child Count, the March 2016 School Record Collection, and the End of Year 2016 Student Record Collection. "Population served" data includes preschoolers who are five years old but have not yet entered kindergarten. The program serves children turning two years old by September 30th of that school year. Amounts for federal funding represent the federal fiscal year while amounts for state funding represent the state fiscal year. State funding supports Special Education preschool teachers and classroom aides. State funding is provided as part of the Standards of Quality funding, based on staffing ratios of 12 to 1 for home-based ECSE participants and 8 to 1 for center-based ECSE participants, and based on the number of children in ECSE on December 1st of that year. State funds do not have to be used specifically within the VPI program structure but a school division could use the funds in conjunction with VPI if it chose to do so, or use the funds as a separate program. Federal funding represents IDEA Part B-619. Data is limited to funding sources tracked by the programs at the state level; funding sources that are not tracked include local funding and other federal special education funds (IDEA Part B).

## Early Intervention (IDEA Part C)

<b>Program category</b> Programs for children with disabilities	<b>Primary population served</b> Children ages 0-2	<b>Population served (FY16)</b> 17,839 children	<b>Lead agency</b> DBHDS
--	---	--	-----------------------------

<b>Purpose</b>	To provide early intervention supports and services to infants and toddlers who are not developing as expected or have a medical condition that can delay normal development.
----------------	---

<b>Eligibility requirements</b>	Participating children must be zero to two years old and have ONE of the following: <ol style="list-style-type: none"> <li>1. A 25% delay in one or more developmental areas</li> <li>2. Atypical development or behavior</li> <li>3. A diagnosed physical or mental condition that has a high probability of resulting in a developmental delay</li> </ol>
---------------------------------	---

	<b>Source (FY17)</b>	<b>Amount (FY17)</b>	<b>Source (FY16)</b>	<b>Amount (FY16)</b>
<b>State funding</b>	General fund	\$15,525,327	General fund	\$13,203,366
<b>Federal funding</b>	IDEA grant	\$11,307,469	IDEA grant	\$10,761,442
<b>Local/other</b>	Multiple	\$40,563,969	Multiple	\$38,959,993
<b>Total funding</b>		\$67,396,765		\$62,924,801

NOTE: "Population served" data reflects the total number of infants and toddlers served who were eligible and entered services in SFY16. "Multiple" funding sources include local government, family fees, and private insurance.

## Education and Early Childhood Support Services

<b>Program category</b> Programs for children with disabilities	<b>Primary population served</b> Children ages 0-4	<b>Population served (FY16)</b> 74 children	<b>Lead agency</b> DBVI
--	---	--	----------------------------

<b>Purpose</b>	To assist the family or professional in understanding the challenges and limitations associated with vision loss and to adjust services and identify accommodations in order to meet the needs of the child.
----------------	--

<b>Eligibility requirements</b>	Children who are blind, vision impaired and deafblind.
---------------------------------	--

	<b>Source (FY17)</b>	<b>Amount (FY17)</b>	<b>Source (FY16)</b>	<b>Amount (FY16)</b>
<b>State funding</b>	General fund	\$565,565	General fund	\$635,783
<b>Federal funding</b>	Not applicable	--	Not applicable	--
<b>Local/other</b>	Not applicable	--	Not applicable	--
<b>Total funding</b>		\$565,565		\$635,783

NOTE: Funding data reflects salaries for the director of the Education Services program and for staff. DBVI currently only tracks expenditures for Education Coordinators' direct service time for ages 0 through 3 for state funding for Early Intervention (Part C) program reporting. In FY16, DBVI expended approximately \$42,862 in salaries for time spent with this population. For FY17, DBVI expended approximately \$42,102 in salaries for time spent with this population.



## Family to Family Network (F2F)

<b>Program category</b> Programs for children with disabilities	<b>Primary population served</b> Children ages 0-4	<b>Population served (FY16)</b> 75 children	<b>Lead agency</b> VDH	
<b>Purpose</b>	To provide support and unbiased information about resources for children who are deaf or hard of hearing.			
<b>Eligibility requirements</b>	Open to any/all family interested. The programs and services are for families of children with hearing loss and that includes extended family members. There is no income eligibility or insurance coverage status eligibility or geographic limitations.			
	<b>Source (FY17)</b>	<b>Amount (FY17)</b>	<b>Source (FY16)</b>	<b>Amount (FY16)</b>
<b>State funding</b>	Not applicable	--	Not applicable	--
<b>Federal funding</b>	MCH block grant, 93.251 Universal Newborn Hearing Screening	\$70,000	MCH block grant, 93.251 Universal Newborn Hearing Screening	\$70,000
<b>Local/other</b>	Not applicable	--	Not applicable	--
<b>Total funding</b>		\$70,000		\$70,000

NOTE: "Population served" data reflects an estimate. The VDH accounting system does not separately track F2F and the Virginia Early Hearing Detection and Intervention Program (VEHDIP). In order to provide separate amounts in this spreadsheet, a ratio of children served by F2F to total children served by F2F and VEHDIP was calculated and used to allocate the funding.

## Virginia Autism Resource Center

<b>Program category</b> Programs for children with disabilities	<b>Primary population served</b> Parents	<b>Population served (FY16)</b> 578 parents	<b>Lead agency</b> VCU	
<b>Purpose</b>	To collaborate with those who love and support a person on the autism spectrum, and to build knowledge and skills so those on the autism spectrum can live, learn and work in the natural community.			
<b>Eligibility requirements</b>	Open to parents, educators, service providers, or medical professionals who live with, work with, or support individuals with an autism spectrum disorder. Open to anyone who wants to learn more about autism spectrum disorders.			
	<b>Source (FY17)</b>	<b>Amount (FY17)</b>	<b>Source (FY16)</b>	<b>Amount (FY16)</b>
<b>State funding</b>	General fund	\$190,000	General fund	\$190,000
<b>Federal funding</b>	Not applicable	--	Not applicable	--
<b>Local/other</b>	Not applicable	--	Not applicable	--
<b>Total funding</b>		\$190,000		\$190,000

NOTE: "Population served" data reflects families accessing online webinars, courses, and live information and referral services.

## Centralized Intake Communities

<b>Program category</b> Voluntary home visiting	<b>Primary population served</b> Parents	<b>Population served (FY16)</b> 3,000 parents	<b>Lead agency</b> VDH	
<b>Purpose</b>	The centralized intake system coordinates linkages to a variety of services in communities for expecting mothers and new parents.			
<b>Eligibility requirements</b>	Any pregnant mother or new parent can call.			
	<b>Source (FY17)</b>	<b>Amount (FY17)</b>	<b>Source (FY16)</b>	<b>Amount (FY16)</b>
<b>State funding</b>	Not applicable	--	Not available	--
<b>Federal funding</b>	MIECHV	\$184,000	MIECHV	\$365,964
<b>Local/other</b>	Not available	--	Not available	--
<b>Total funding</b>		\$184,000		\$365,964

## Comprehensive Health Investment Project (CHIP) of Virginia

<b>Program category</b> Voluntary home visiting	<b>Primary population served</b> Parents	<b>Population served (FY16)</b> 2,267 families	<b>Lead agency</b> VDH	
<b>Purpose</b>	To improve the health of children, families, and communities; promote parental involvement and strengthen each family's ability to move toward self-sufficiency; and provide a stable environment where children grow up healthy, safe, ready to learn and ready to succeed.			
<b>Eligibility requirements</b>	Participants must meet ALL of the following criteria: <ol style="list-style-type: none"> <li>1. Have one or more children between birth and six years old OR be expecting a baby</li> <li>2. Have an income at or below 200% of the federal poverty line</li> <li>3. Live in a locality with a CHIP program</li> </ol>			
	<b>Source (FY17)</b>	<b>Amount (FY17)</b>	<b>Source (FY16)</b>	<b>Amount (FY16)</b>
<b>State funding</b>	General fund	\$808,391	General fund	\$832,946
<b>Federal funding</b>	TANF	\$2,400,000	MIECHV	\$1,400,000
<b>Local/other</b>	Not available	--	Not available	--
<b>Total funding</b>		\$3,208,391		\$2,232,946

NOTE: CHIP of Virginia is not part of the State Children's Health Insurance Program (SCHIP) or FAMIS.

## Early Impact Virginia (formerly Virginia Home Visiting Consortium)

<b>Program category</b> Voluntary home visiting	<b>Primary population served</b> Providers/professionals	<b>Population served (FY16)</b> 524 providers/professionals	<b>Lead agency</b> VDH	
<b>Purpose</b>	Bring together home visiting and early childhood leaders to enhance collaboration and facilitate more effective system building at the state and local level.			
<b>Eligibility requirements</b>	Members may be home visiting programs OR Virginia state agencies. Partners include state and local early childhood programs and organizations.			
	<b>Source (FY17)</b>	<b>Amount (FY17)</b>	<b>Source (FY16)</b>	<b>Amount (FY16)</b>
<b>State funding</b>	Not applicable	--	Not applicable	--
<b>Federal funding</b>	MIECHV	\$124,080	MIECHV	\$10,200
<b>Local/other</b>	Not applicable	--	Not applicable	--
<b>Total funding</b>		\$124,080		\$10,200

NOTE: The Virginia Home Visiting Consortium (now called Early Impact Virginia) is an alliance of state leaders who come together to plan and share information about home visiting and related early childhood issues. The expenditures are more administrative in nature, and are charged to the Federal MIECHV Home Visiting Grant.

## James Madison University / Home Visiting Professional Development

<b>Program category</b> Voluntary home visiting	<b>Primary population served</b> Professionals	<b>Population served (FY16)</b> Over 400 home visitors and supervisors statewide	<b>Lead agency</b> VDH	
<b>Purpose</b>	The JMU Health Education and Design Group develops and coordinates web-based and live core competency trainings for all home visitors across the state.			
<b>Eligibility requirements</b>	Not applicable			
	<b>Source (FY17)</b>	<b>Amount (FY17)</b>	<b>Source (FY16)</b>	<b>Amount (FY16)</b>
<b>State funding</b>	Not available	--	Not available	--
<b>Federal funding</b>	MIECHV	\$300,746	MIECHV	\$405,448
<b>Local/other</b>	Not available	--	Not available	--
<b>Total funding</b>		\$300,746		\$405,448

## Loving Steps/Virginia Healthy Start Initiative

<b>Program category</b> Voluntary home visiting	<b>Primary population served</b> Mothers	<b>Population served (FY16)</b> 308 mothers	<b>Lead agency</b> VDH	
<b>Purpose</b>	To reduce infant mortality and perinatal health disparities by delivering high-quality, effective prevention strategies to individuals, families and communities.			
<b>Eligibility requirements</b>	Participants are mothers, age 18 and older, who live in one of three served localities identified for high infant mortality rates, Loving Steps prioritizes low-income, first-time mothers who are less than 28 weeks pregnant.			
	<b>Source (FY17)</b>	<b>Amount (FY17)</b>	<b>Source (FY16)</b>	<b>Amount (FY16)</b>
<b>State funding</b>	Not applicable	--	Not applicable	--
<b>Federal funding</b>	Healthy Start	\$1,080,000	Healthy Start	\$1,080,000
<b>Local/other</b>	Not available	--	Not available	--
<b>Total funding</b>		\$1,080,000		\$1,080,000

## Nurse-Family Partnership

<b>Program category</b> Voluntary home visiting	<b>Primary population served</b> Mothers	<b>Population served (FY16)</b> 265 mothers	<b>Lead agency</b> VDH	
<b>Purpose</b>	To improve prenatal health and help parents access resources and develop the skills needed to raise children who are physically, socially, and emotionally healthy and ready to learn.			
<b>Eligibility requirements</b>	Participants must meet ALL of the following criteria: 1. Be a first-time mother 2. Enroll prior to 29 weeks of pregnancy 3. Meet income requirements (WIC or Medicaid eligible) 4. Live in an Nurse-Family Partnership service area			
	<b>Source (FY17)</b>	<b>Amount (FY17)</b>	<b>Source (FY16)</b>	<b>Amount (FY16)</b>
<b>State funding</b>	Not applicable	--	Not applicable	--
<b>Federal funding</b>	MIECHV	\$1,079,425	MIECHV	\$1,056,956
<b>Local/other</b>	Not available	--	Not available	--
<b>Total funding</b>		\$1,079,425		\$1,056,956

NOTE: Program implemented in three health districts.



## Parents as Teachers

<b>Program category</b> Voluntary home visiting	<b>Primary population served</b> Parents	<b>Population served (FY16)</b> 791 families	<b>Lead agency</b> VDH	
<b>Purpose</b>	Improve parenting practices and parent knowledge of child development, provide early detection of developmental delays and health issues, prevent child abuse and neglect, and increase children's school readiness.			
<b>Eligibility requirements</b>	Intended for expecting families and parents of children ages birth through five years old.			
	<b>Source (FY17)</b>	<b>Amount (FY17)</b>	<b>Source (FY16)</b>	<b>Amount (FY16)</b>
<b>State funding</b>	Not applicable	--	Not applicable	--
<b>Federal funding</b>	MIECHV	\$3,100,785	MIECHV	\$2,894,289
<b>Local/other</b>	Not available	--	Not available	--
<b>Total funding</b>		\$3,100,785		\$2,894,289

NOTE: Includes funds allocated to CHIP of Virginia as Parents as Teachers state office for fidelity monitoring and quality assurance.

## Project LINK

<b>Program category</b> Voluntary home visiting	<b>Primary population served</b> Mothers	<b>Population served (FY16)</b> 784 mothers	<b>Lead agency</b> DBHDS	
<b>Purpose</b>	To provide intensive case management and home visiting services to pregnant and parenting women who are "at risk" or are currently abusing substances.			
<b>Eligibility requirements</b>	Participants must meet ALL of the following criteria: 1. Be a pregnant or parenting woman (or her family) 2. Live in an area served by Project LINK  Project LINK prioritizes women who currently abuse or are at risk of abusing substances.			
	<b>Source (FY17)</b>	<b>Amount (FY17)</b>	<b>Source (FY16)</b>	<b>Amount (FY16)</b>
<b>State funding</b>	General fund	\$250,000	General fund	\$250,000
<b>Federal funding</b>	SAPT block grant	\$600,000	SAPT block grant	\$600,000
<b>Local/other</b>	Not available	--	Not available	--
<b>Total funding</b>		\$850,000		\$850,000

NOTE: SAPT stands for Substance Abuse Prevention and Treatment. "Population served" data reflects 547 open cases and 237 closed cases as of June 30, 2016. Local funding amounts vary by site and are not tracked by the state.

## Resource Mothers

<b>Program category</b> Voluntary home visiting	<b>Primary population served</b> Mothers	<b>Population served (FY16)</b> 461 mothers	<b>Lead agency</b> VDH	
<b>Purpose</b>	To decrease infant mortality and low birth weight rates among Virginia's teen mothers.			
<b>Eligibility requirements</b>	Resource Mothers exclusively serves pregnant teenagers. Resource Mothers prioritizes first-time mothers without adequate family support.			
	<b>Source (FY17)</b>	<b>Amount (FY17)</b>	<b>Source (FY16)</b>	<b>Amount (FY16)</b>
<b>State funding</b>	Not applicable	--	Not applicable	--
<b>Federal funding</b>	TANF	\$1,000,000	TANF	\$1,127,961
<b>Local/other</b>	Not available	--	Not available	--
<b>Total funding</b>		\$1,000,000		\$1,127,961

NOTE: Program implemented in five health districts and two local nonprofit agencies.

## Virginia Healthy Families Program

<b>Program category</b> Voluntary home visiting	<b>Primary population served</b> Parents	<b>Population served (FY16)</b> 5,466 parents	<b>Lead agency</b> VDSS/VDH
--	---	--	--------------------------------

<b>Purpose</b>	To promote positive parenting, improve child health and development, and reduce child abuse and neglect by following the Healthy Families America home visiting model.
<b>Eligibility requirements</b>	<p>Participants must meet ALL of the following criteria:</p> <ol style="list-style-type: none"> <li>1. Be a first time parent*</li> <li>2. Be assessed within 2 weeks of the birth of their baby</li> <li>3. Have risk of child maltreatment, defined as having a history of trauma, intimate partner violence, or mental health or substance abuse issues</li> </ol> <p>*According to a Healthy Families staff member, some programs are expanding eligibility to include second- and third-time mothers.</p>

	<b>Source (FY17)</b>	<b>Amount (FY17)</b>	<b>Source (FY16)</b>	<b>Amount (FY16)</b>
<b>State funding</b>	Not applicable	--	Not applicable	--
<b>Federal funding</b>	TANF, MIECHV	\$10,452,513	TANF, MIECHV	\$6,542,343
<b>Local/other</b>	Not available	--	Not available	--
<b>Total funding</b>		\$10,452,513		\$6,542,343

NOTE: Program is part of Early Impact Virginia. Includes funds allocated to Prevent Child Abuse Virginia as Healthy Families state office for fidelity monitoring and quality assurance.

## Child and Dependent Care Expenses Deduction

<b>Program category</b> Early learning	<b>Primary population served</b> Parents	<b>Population served (FY16)</b> 205,217 parents	<b>Lead agency</b> TAX	
<b>Purpose</b>	To assist taxpayers in maintaining full-time, gainful employment by providing some relief to taxpayers who pay for child and/or dependent care.			
<b>Eligibility requirements</b>	<p>Claimants must</p> <ol style="list-style-type: none"> <li>1. Be eligible to claim a credit on their federal return</li> <li>2. Be gainfully employed or actively seeking employment (applies to both parents in a dual-parent household)</li> </ol> <p>Deduction applies only to dependents (qualifying individuals) who are</p> <ol style="list-style-type: none"> <li>1. Under the age of 13</li> </ol> <p>OR</p> <ol style="list-style-type: none"> <li>2. Physically or mentally incapable of self-care</li> </ol> <p>Expenses must</p> <ol style="list-style-type: none"> <li>1. Relate to the care, well-being, and protection of the qualifying individual</li> <li>2. NOT relate to education costs for kindergarten and above, but may relate to before and after school care.</li> </ol>			
	<b>Source (FY17)</b>	<b>Amount (FY17)</b>	<b>Source (FY16)</b>	<b>Amount (FY16)</b>
<b>State funding</b>	Forgone tax revenue	--	Forgone tax revenue	\$28,868,437
<b>Federal funding</b>	Not applicable	--	Not applicable	--
<b>Local/other</b>	Not applicable	--	Not applicable	--
<b>Total funding</b>				\$28,868,437

NOTE: Parents who participate in this program are taxpayers. "Funding" data reflects forgone tax revenue. Forgone revenue for FY17 is not yet available. Deduction was not created to promote healthy brain and skills development of children. However, child care services that the deduction helps to fund can promote development, and many other states use child care tax incentives to promote development.

## VECF Base Funding/Smart Beginnings Network

<b>Program category</b> Other	<b>Primary population served</b> Communities	<b>Population served (FY16)</b> 87 communities	<b>Lead agency</b> VDSS/VECF	
<b>Purpose</b>	To develop comprehensive local early childhood systems.			
<b>Eligibility requirements</b>	Available to any community that implements the Smart Beginnings Model as defined by the Smart Beginnings Theory of Change and Core Principles and guided by the VECF Framework for Smart Beginnings.			
	<b>Source (FY17)</b>	<b>Amount (FY17)</b>	<b>Source (FY16)</b>	<b>Amount (FY16)</b>
<b>State funding</b>	General fund	\$1,250,000	General fund	\$1,250,000
<b>Federal funding</b>	Not applicable	--	Not applicable	--
<b>Local/other</b>	Leveraged funds	\$9,836,095	Leveraged funds	\$7,649,344
<b>Total funding</b>		\$11,086,095		\$8,899,344

NOTE: 17 Smart Beginnings initiatives make up a statewide network of local early childhood systems. State funds were used to leverage additional support for the Smart Beginnings network.

## Virginia Longitudinal Data System

<b>Program category</b> Other	<b>Primary population served</b> Not applicable	<b>Population served (FY16)</b> Not applicable	<b>Lead agency</b> SCHEV	
<b>Purpose</b>	To provide state policymakers, authorized researchers, and citizens with access to educational and workforce training data from multiple sources while protecting the privacy of Virginia students.			
<b>Eligibility requirements</b>	Not applicable			
	<b>Source (FY17)</b>	<b>Amount (FY17)</b>	<b>Source (FY16)</b>	<b>Amount (FY16)</b>
<b>State funding</b>	General fund	\$357,500	General fund	\$168,000
<b>Federal funding</b>	State set-asides for WIOA to the VCCS	\$150,000	Not applicable	--
<b>Local/other</b>	Not applicable	--	Not applicable	--
<b>Total funding</b>		\$507,500		\$168,000

NOTE: "Population served" data is not applicable because Virginia Longitudinal Data System is a data system. Federal funds are part of the state set asides for WIOA to the VCCS and are available under an MOA to provide reports on workforce development.



**JLARC.VIRGINIA.GOV**

919 East Main Street Suite 2101 Richmond, VA 23219